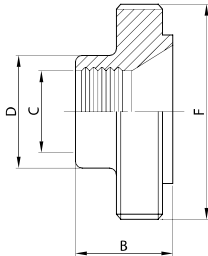




**RIDUZIONE FILETTATA MR.  
EG. MALE REDUCER  
NEZ FILETÉ RÉDUIT DR.  
MACHO R. REDUCCIÓN MR.**

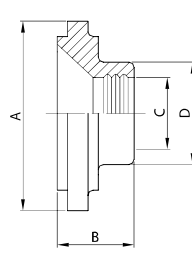
**105 I**



DN	B	C	D	F	gr
38/25	25,0	25,4	29,2	50-8	120
51/25	25,0	25,4	29,2	64-8	140
51/38	28,0	38,1	42,7	64-8	160
63/38	30,0	38,1	42,7	77-8	230
63/51	30,0	50,8	56,2	77-8	270
76/38	30,0	38,1	42,7	91-8	310
76/51	35,0	50,8	56,2	91-8	360
76/63	35,0	63,5	69,9	91-8	410
101/63	35,0	63,5	69,9	118-8	620
101/76	35,0	76,2	82,6	118-8	730

**RIDUZIONE LISCIA MR.  
EG. LINER REDUCER  
DOUILLE RÉDUITE DR.  
CASQUILLO R. REDUC. MR.**

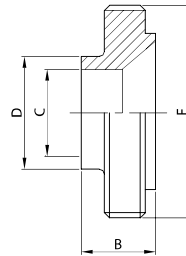
**115 I**



DN	A	B	C	D	gr
38/25	47,0	25,0	25,4	29,0	110
51/25	60,5	25,0	25,4	29,0	185
51/38	60,5	28,0	38,1	42,5	150
63/38	74,0	30,0	38,1	42,5	230
63/51	74,0	30,0	50,8	56,0	205
76/38	87,5	30,0	38,1	42,5	390
76/51	87,5	35,0	50,8	56,0	375
76/63	87,5	35,0	63,5	69,7	320
101/63	114,1	35,0	63,5	69,7	570
101/76	114,1	35,0	76,2	82,3	540

**RIDUZIONE FILETTATA SR.  
WG. MALE REDUCER  
NEZ FILETÉ RÉDUIT DR.  
MACHO R. REDUCCIÓN SR.**

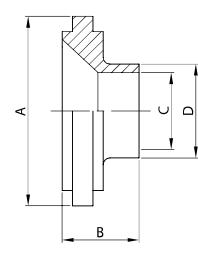
**106 I**



DN	B	C	D	F	gr
38/25	25,0	22,1	25,4	50-8	130
51/25	25,0	22,1	25,4	64-8	180
51/38	25,0	34,8	38,1	64-8	210
63/38	25,0	34,8	38,1	77-8	250
63/51	25,0	47,5	50,8	77-8	290
76/38	25,0	34,8	38,1	91-8	320
76/51	25,0	47,5	50,8	91-8	380
76/63	25,0	60,2	63,5	91-8	430
101/63	25,0	60,2	63,5	118-8	500
101/76	25,0	72,9	76,2	118-8	590

**RIDUZIONE LISCIA SR.  
WG. LINER REDUCER  
DOUILLE RÉDUITE SR.  
CASQUILLO R. REDUC. SR.**

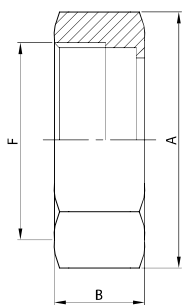
**116 I**



DN	A	B	C	D	gr
38/25	47,0	18,0	22,1	25,4	95
51/25	60,5	18,0	22,1	25,4	165
51/38	60,5	18,0	34,8	38,1	150
63/38	74,0	18,0	34,8	38,1	235
63/51	74,0	18,0	47,5	50,8	190
76/38	87,5	18,0	34,8	38,1	345
76/51	87,5	18,0	47,5	50,8	305
76/63	87,5	18,0	60,2	63,5	250
101/63	114,1	18,0	60,2	63,5	530
101/76	114,1	18,0	72,9	76,2	480

**GIRELLA ESAGONALE  
HEX NUT  
ÉCROU HEXAGONAL  
TUERCA EXAGONAL**

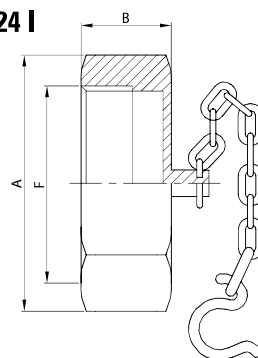
**121 I**



DN	A	B	F	gr
25	46,0	30,0	37-8	185
38	60,0	30,0	50-8	275
51	75,0	30,0	64-8	400
63	90,0	30,0	77-8	580
76	105,0	30,0	91-8	700
101	134,0	30,0	118-8	1.100

**GIRELLA CIECA + CAT.  
ROUND NUT + CHAIN  
ÉCROU BOUCHON + CH.  
TUERCA CIEGA + CAD.**

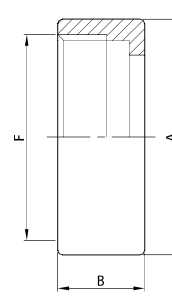
**124 I**



DN	A	B	F	gr
25	46,0	30,0	37-8	245
38	60,0	30,0	50-8	405
51	75,0	30,0	64-8	620
63	90,0	30,0	77-8	910
76	105,0	30,0	91-8	1.050
101	134,0	30,0	118-8	1.930

**GIRELLA TONDA LISCIA  
ROUND NUT  
ÉCROU ROND LISSE  
TUERCA REDONDA LISA**

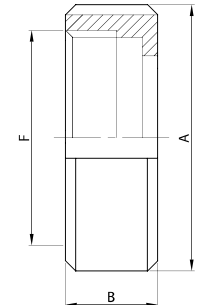
**122 I**



DN	A	B	F	gr
25	44,5	30,0	37-8	130
38	57,0	30,0	50-8	140
51	70,0	30,0	64-8	180
63	85,5	30,0	77-8	290
76	101,5	30,0	91-8	450
101	129,0	30,0	118-8	900

**GIR. TONDA CON TACCHE  
NOTCHES ROUND NUT  
ÉCROU À CRANS  
TUERCA REDONDA**

**123 I**



DN	A	B	F	gr
25	48,0	30,0	37-8	165
38	64,0	30,0	50-8	255
51	77,0	30,0	64-8	310
63	91,0	30,0	77-8	360
76	106,0	30,0	91-8	500
101	135,0	30,0	118-8	900